



30Nm tubular motor

For rolling shutters and awnings



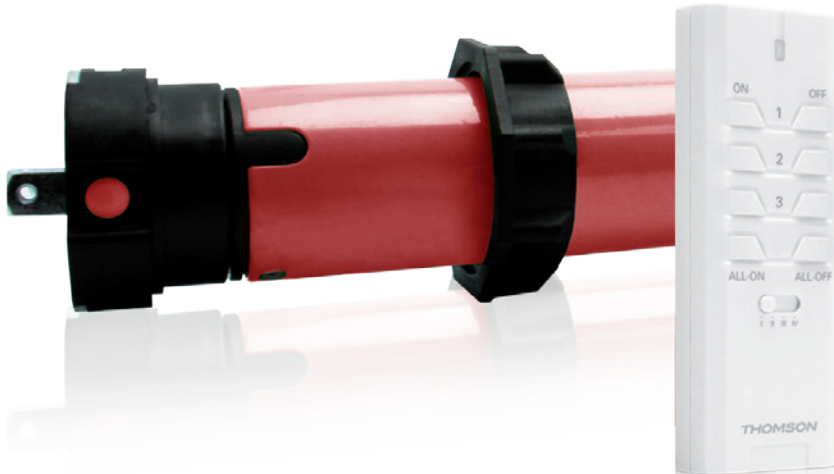
Guarantee

2
years

HelpLine



0 892 701 369*



Openers

Ref. 500014

Gencod 3660215000140

Technical specifications

- ▶ 1 45mm diameter tubular motor
- ▶ 1 head adaptor to drive the roller shutter tube
- ▶ 1 connecting ring for the roller shutter tube
- ▶ 1 mounting bracket for the tubular motor
- ▶ 1 snap ring + 1 pin
- ▶ 1 868.3MHz electronic control module, radio range 150m
- ▶ 1 remote control with CR2032 3V battery (supplied)

Features

- ▶ This easy-to-install kit will allow you to add motor control to a roller shutter or blind fitted to a 60mm octagonal tube. With its built-in radio module, you can control the mechanism via the supplied remote control or via a smartphone or tablet. Suitable for use with shutters up to a maximum weight of 70kg and maximum size of 9m². For blinds, the maximum recommended length is 4m. You can then program your shutters to be opened and closed via **Thombox** scenes (opening when smoke is detected, simulated occupancy, closing in the event an intrusion attempt, etc.).

Connected
Home