

Remote-controlled socket for indoor lighting
ref. 500101



A - SAFETY INSTRUCTIONS

A1 - OPERATING PRECAUTIONS

- Do not allow children to operate the product.
- This product is designed exclusively for indoor use.

A2 - SERVICING AND CLEANING

- Disconnect the product from the mains before undertaking any maintenance.
- Use a soft, slightly damp cloth to clean your product.
- Do not use abrasive or corrosive substances.
- Do not spray any products directly onto the unit.

A3 - RECYCLING



Disposing of used batteries in the household waste is strictly forbidden. Batteries/accumulators containing harmful substances are marked with symbols (shown opposite) which indicate that it is forbidden to discard them in the household waste. The corresponding heavy metal designations are as follows: Cd = cadmium, Hg = mercury, Pb = lead. You can dispose of these batteries/accumulators at local recycling amenities (centres for sorting recyclable materials) which are required to accept them. Keep batteries/button cells/accumulators out of reach of children and store them in a safe place not accessible to them as they could be swallowed by children or domestic animals. May be fatal if swallowed.

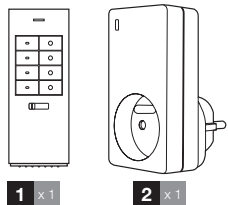
In the event that a battery is swallowed, consult a doctor or go to A&E immediately. Never short-circuit the batteries, and do not burn or recharge them as they may explode!



This logo denotes that devices which are no longer in use must not be disposed of as household waste as they are likely to contain hazardous substances which are dangerous to both health and the environment. Return the equipment to your local distributor or use the recycling collection service provided by your local council.

B - PRODUCT DESCRIPTION

B1 - PACK CONTENTS



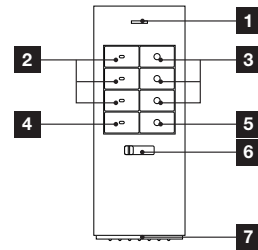
1 x 1

2 x 1

- | | |
|---|--------------------------|
| 1 | Remote control |
| 2 | Remote-controlled socket |

B2 - REMOTE CONTROL

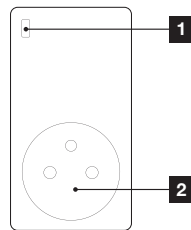
Front



- | | |
|---|-------------------------------|
| 1 | System on indicator light |
| 2 | Channel 1, 2, 3 on buttons |
| 3 | Channel 1, 2, 3 off buttons |
| 4 | 3-channel on button |
| 5 | 3-channel off button |
| 6 | Group selector (1, 2, 3 or 4) |
| 7 | Battery compartment |

B3 - REMOTE-CONTROLLED SOCKET

Front



- | | |
|---|------------------------------------------------|
| 1 | System on indicator light and pairing button |
| 2 | Remote-controlled power socket (maximum 2000W) |

C - ABOUT THE THOMBOX CONCEPT

The Thombox is a home automation unit which connects to your ADSL modem (Freebox, Livebox, etc.) and enables you to manage your home security from any location as if you were using the actual alarm control unit at home or remotely. The system also allows you to control your comfort accessories (lighting, etc.), openers (shutter motors, garage doors, etc.) and manage your energy use (heating and electricity consumption) with just a few clicks on a computer, touchscreen tablet or smartphone, from anywhere in the world with an internet connection.

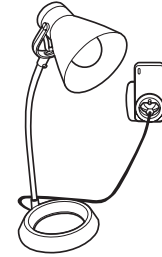
To enable the above and be able to create scenes (action sequences) which will simplify your day-to-day life, you need to register your Thombox (only when you first install it), and pair your ARW technology compatible accessories with it.

The Thombox is completely modular and there is no limit to the number of accessories it can control.

D - INSTALLATION

D1 - REMOTE CONTROLLED SOCKET

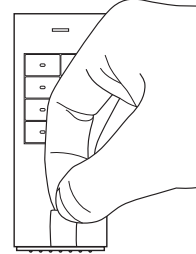
Connect the socket to the mains and the device to be controlled to the socket.



Illustrative purposes only

D2 - REMOTE CONTROL

Remove the tab on the back of the remote control to connect the battery.

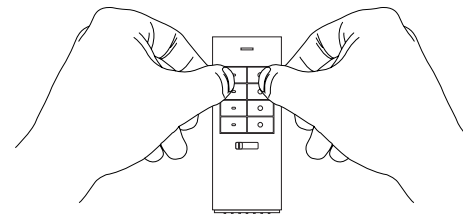


E - CONFIGURATION

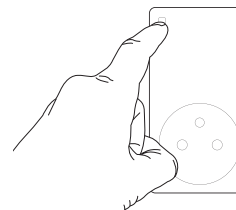
E1 - PROGRAMMING

To pair the socket to one of the remote control channels, the device connected to the socket must be turned off. If necessary, press briefly on the pairing button on the front of the socket.

- On the remote control, press and hold the 'on' and 'off' buttons for the channel you want to use at the same time for 3 seconds. The LED on the remote control blinks red.



- While the LED on the remote control is blinking, press and hold the button on the front of the socket for 3 seconds. Pairing is now complete.



E2 - PROGRAMMING WITH OTHER ACCESSORIES

Any element can be paired with other devices from the range: wall remote control, remote control light bulb socket, universal drive relay, Thombox, etc.

- To pair the remote control with another device to be controlled, press and hold the 'on' and 'off' buttons for the required channel you want to use for 3 seconds.
- Then place the device to be controlled into pairing mode. Refer to the device's user guide to find out how to do this.

Notes: You can pair up to five devices per channel (1, 2 or 3). Dimmer-type lamp sockets cannot be paired on the same channel as other kinds of sockets or devices. Dimmer-type sockets must be allocated to a specific channel.

To pair the socket to another control device, please refer to the user guide for the device you wish to pair with your product.

During pairing, you will be asked to put the socket into pairing mode:

- The device connected to the socket should be turned off. If necessary, press briefly on the pairing button on the front of the socket.
- When asked to put the socket into pairing mode, press and hold the pairing button on the socket for at least 3 seconds.

F - USING THE PRODUCT

F1 - USING THE PRODUCT WITH ANY DEVICE

- The 'on' and 'off' buttons for each channel on the remote control allow the socket to be turned on and off respectively.
- The 3-channel 'on' and 'off' buttons on the remote control allow all devices paired to one of the 3 remote control channels to be turned on and off.
- You can turn your socket on and off from any device paired to the socket. Please refer to the user guide for each of the paired devices to find out how to turn on and off your remote-controlled socket.
- Pressing the button on the remote-controlled socket switches the socket on and off in turn. If the socket is paired to a Thombox, the Thombox is informed of this change.

F2 - USING THE PRODUCT WITH THE THOMBOX

- When you pair your socket with a Thombox, your socket will appear in the 'Lights & Power' section. Your socket will also appear as an 'Actionneur [Actuator]' in the rule creator. You can then create rules to manage when your socket turns on and off.
- When you pair your remote control with a Thombox, it does not appear in the dashboard but is available in the rule creator in the 'Control' section. You can then create rules which you can trigger using the buttons on your remote control.

F3 - DELETING A DEVICE FROM THE REMOTE CONTROL MEMORY

To remove the remote-controlled socket controlled using a channel on the remote control, repeat the programming steps in this guide with the relevant channel. By programming the socket twice on the same channel, the socket is removed from the channel.

F4 - REMOVING ALL DEVICES FROM A REMOTE CONTROL CHANNEL

- To delete all devices operated via one remote control channel, press and hold the 'on' and 'off' buttons for the relevant channel for 3 seconds.
- Release the buttons, then once again hold the 'on' and 'off' buttons for 3 seconds.

All appliances controlled via this channel will then be deleted from the memory.

F5 - CLEARING FEATURE

The clearing feature of the remote control allows you to remove all unused devices from a channel (e.g. a remote-controlled socket which is no longer available to you).

- To clear a channel on the remote control, press and hold the 'on' and 'off' buttons for the relevant channel for 3 seconds.
- Release the buttons, then hold the 'on' button for 3 seconds.

If a device fails to respond 20 times in a row after the relevant channel button is pressed, it has been deleted from the memory. All other devices which are still in use remain in the memory.

F6 - USING THE GROUP SELECTOR

Your remote control can manage 4 groups of 3 channels each. Move the group selector to positions I, II, III, or IV to choose which group of devices to operate.

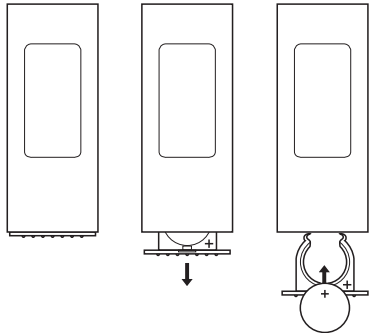
Notes:

- Each channel can operate up to 5 different devices.
- The 3-channel on and off buttons at the base of the remote control only affect the devices paired to the currently selected group.

F7 - REPLACING THE REMOTE CONTROL BATTERY

If you notice that the range of your remote control is decreasing, the battery should be replaced. If the remote control is paired with a Thombox, the Thombox is informed of this.

Use a 3V CR2032 battery.



Under normal conditions, battery life is approximately one year.

G - TECHNICAL AND LEGAL INFORMATION

G1 - TECHNICAL CHARACTERISTICS

REMOTE-CONTROLLED SOCKET:

- Radio frequency: ARW 868.3MHz protocol
- Radio range: Up to 150m in open air*
- Power supply: 230V AC 50Hz
- Operating temperature: 0°C to 40°C, indoor use only
- Maximum power: 2000W (9A)

REMOTE CONTROL:

- Radio frequency: ARW 868.3MHz protocol
- Radio range: Up to 150m in open air*
- Power supply: 3V DC via a CR2032 battery
- Number of channels: 4 groups of 3 channels
- Number of devices per channel: 5
- Operating temperature: 0°C to 40°C, indoor use only

*The indicated radio range refers to the open air range, i.e. no obstacles between the receiver and the transmitter. Any obstacle or disturbance will reduce this range.

G2 - WARRANTY

This product is guaranteed for parts and labour for 2 years from the date of purchase. It is essential to retain the proof of purchase for the duration of the warranty period.

The guarantee does not cover damage caused by knocks or accidents.

This product must not be opened or repaired by any persons not employed by AVIDSEN except to insert or replace the batteries.

So-called consumables, such as the batteries, are not covered by the warranty.

G3 - ASSISTANCE AND ADVICE

- If, in spite of the care we have taken in designing our products and drafting these instructions, you do encounter difficulties when installing your product or you have any questions, we urge you to contact one of our specialists who will be glad to help.
- If you encounter operating problems during the installation or a few days afterwards, it is essential that you are in front of your installation when contacting us, so that one of our technicians can diagnose the source of the problem, as it will probably be the result of a setting that is incorrect or an installation that is not to specification. If the problem is caused by the product itself, the technician will give you an RMA number so that you can return the unit to the shop. Without this RMA number, the shop may refuse to exchange your product.

Need help when setting up or installing your Thombox, or when pairing your accessories from the Thomson Connected Home range?

Contact our after-sales service technicians on:

Tel: + 33 (0)892 701 369

(Audiotele: €0.337/min incl. VAT)

Monday to Friday, 9 AM to 12 PM and 2 PM to 6 PM.

G4 - DECLARATION OF CONFORMITY

With the R&TTE directive

AVIDSEN hereby declares that the following equipment: Remote-controlled socket for indoor lighting 500101

Complies with the R&TTE 1999/5/CE directive and that its conformity has been assessed pursuant to the applicable standards in force:

EN62479:2010
EN60669-1:1999+A1:2002+A2:2008
EN60669-2-1:2004
EN301489-1 V1.9.2
EN301489-3 V1.4.1
EN300220-2 V2.4.1

Signed at Chambray les Tours on 25/11/2014 by

Alexandre
Chaverot, CEO



Visit our website to find out more about our Thomson range at

www.thomsonbox.eu

THOMSON is a **TECHNICOLOR S.A.** brand used under licence by:

Avidsen France S.A.S. - 32, rue Augustin Fresnel
37170 Chambray les Tours - France