

## Micro receiver module for indoor lighting

ref. 500116



### A - SAFETY INSTRUCTIONS

#### A1 - OPERATING PRECAUTIONS

- Do not allow children to operate the product.
- This product is designed exclusively for indoor use.
- Never connect this module or the switch that controls it to the electrical network.
- This product is designed to work exclusively with devices from the range: remote-controlled socket, universal drive relay, Thombox, etc.

#### A2 - SERVICING AND CLEANING

- Use a soft, slightly damp cloth to clean your product.
- Do not use abrasive or corrosive substances.
- Do not spray any products directly onto the unit.

#### A3 - RECYCLING



It is forbidden to throw used batteries into the dustbin. Batteries/accumulators containing harmful substances are marked with symbols (shown opposite) which indicate that they cannot be thrown away as ordinary waste. The corresponding heavy metal designations are as follows: Cd = cadmium, Hg = mercury, Pb = lead. You can dispose of these batteries/accumulators at local recycling amenities (centres for sorting recyclable materials) which are required to accept them. Keep batteries/button cells/accumulators out of reach of children and store them in a safe place not accessible to them as they could be swallowed by children or domestic animals. May be fatal if swallowed!  
In the event that a battery is swallowed, consult a doctor or go to A&E immediately. Never short-circuit the batteries, and do not burn or recharge them as they may explode!

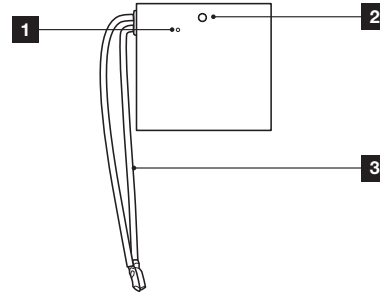


This logo denotes that devices which are no longer in use must not be disposed of as household waste as they are likely to contain hazardous substances which are dangerous to both health and the environment. Return the equipment to your local distributor or use the recycling collection service provided by your local council.

### B - PRODUCT DESCRIPTION

#### B1 - TRANSMITTER MICRO MODULE

Front



1	System on indicator light
2	Pairing button
3	Connection wire

#### C - ABOUT THE THOMBOX CONCEPT

The Thombox is a home automation unit which connects to your ADSL modem (Freebox, Livebox, etc.) and enables you to manage your home security from any location as if you were using the actual alarm control unit at home or remotely. The system also allows you to control your comfort accessories (lighting, etc.), openers (shutter motors, garage doors, etc.) and manage your energy use (heating and electricity consumption) with just a few clicks on a computer, touchscreen tablet or smartphone, from anywhere in the world with an internet connection.

To enable the above and be able to create scenes (action sequences) which will simplify your day-to-day life, you need to register your Thombox (only when you first install it), and pair your ARW technology compatible accessories with it.

The Thombox is completely modular and there is no limit to the number of accessories it can control.

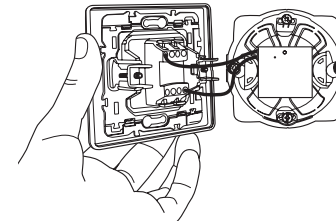
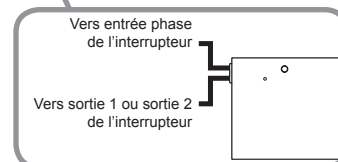
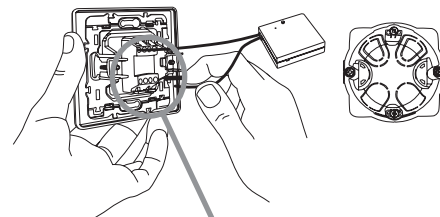
#### D - INSTALLATION

##### D1 - TRANSMITTER MICRO MODULE

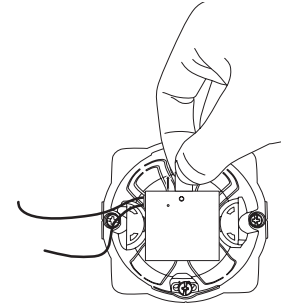
The transmitter micro module is designed to be placed in a suitable recess-mount housing, behind a switch.

**Warning: Never connect this module or the switch that controls it to the electrical network.**

Connect the module to the switch as follows:



Remove the tab on the side of the transmitter micro module to connect the battery.

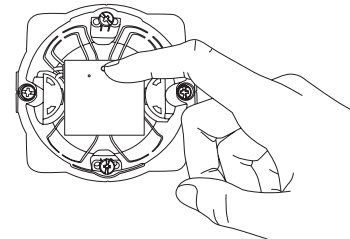


#### E - CONFIGURATION

##### E1 - PROGRAMMING

Your transmitter micro module can be paired with other devices from the Thomson Connected Home range: remote-controlled socket, universal drive relay, Thombox, etc.

- To pair the transmitter micro module with another device, hold its pairing button for 3 seconds.



- Then place the device to be controlled into pairing mode. Refer to the device's user guide to find out how to do this.

Notes: You can pair up to five devices.

#### F - USING THE PRODUCT

##### F1 - USING THE PRODUCT WITH ANY DEVICE

The switch connected to the module allows you to control the paired device. Please refer to the user guide of the relevant devices to understand what the commands do (opening a drive, turning on a light, etc.).

##### F2 - USING THE PRODUCT WITH THE THOMBOX

When you pair your transmitter micro module with a Thombox, it does not appear in the dashboard but is available in the rule creator in the 'Control' section. You can then create rules which you can trigger using the switch connected to the module.

#### F3 - REMOVING ALL SAVED DEVICES

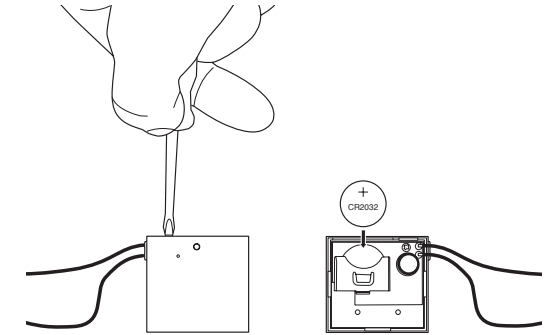
- To remove all of the devices controlled by the transmitter micro module, hold the pairing button for 3 seconds.
- Release then hold the pairing button on the module for 3 seconds. All appliances controlled via the module will then be deleted from the memory.

#### F4 - REPLACING THE TRANSMITTER MICRO MODULE BATTERY

If you notice that the range of your module is decreasing, the battery should be replaced. If the module is paired with a Thombox, the Thombox is informed of this.

Use a 3V CR2032 battery.

Under normal conditions, battery life is approximately one year.



#### G - TECHNICAL AND LEGAL INFORMATION

##### G1 - TECHNICAL CHARACTERISTICS

- Radio frequency: 868.3MHz, ARW protocol
- Radio range: up to 150m, open air range\*
- Power supply: 3V DC via a CR2032 battery
- Maximum number of devices in memory: 5
- Operating temperature: 0°C to 40°C, indoor use only

\*The indicated radio range refers to the open air range, i.e. no obstacles between the receiver and the transmitter. Any obstacle or disturbance will reduce this range.

##### G2 - WARRANTY

This product is guaranteed for parts and labour for 2 years from the date of purchase. It is essential to retain the proof of purchase for the duration of the warranty period.

The guarantee does not cover damage caused by knocks or accidents. This product must not be opened or repaired by any persons not employed by AVIDSEN except to insert or replace the batteries.

So-called consumables, such as the batteries, are not covered by the warranty.

### G3 - ASSISTANCE AND ADVICE

- If, in spite of the care we have taken in designing our products and drafting these instructions, you do encounter difficulties when installing your product or you have any questions, we urge you to contact one of our specialists who will be glad to help.
- If you encounter operating problems during the installation or a few days afterwards, it is essential that you are in front of your installation when contacting us, so that one of our technicians can diagnose the source of the problem, as it will probably be the result of a setting that is incorrect or an installation that is not to specification. If the problem is caused by the product itself, the technician will give you an RMA number so that you can return the unit to the shop.  
Without this RMA number, the shop may refuse to exchange your product.

Any help during the installation of your Thombox, or during the association of your Thomson Connected Homes range devices? Please call our technical team at the following number:

**Tel: + 33 (0)892 701 369**

(Audiotel: €0,337/min incl. VAT)

**Monday to Friday, 9 AM to 12 PM and 2 PM to 6 PM.**

### G4 - DECLARATION OF CONFORMITY

*With the R&TTE directive*

AVIDSEN hereby declares that the following equipment: Micro receiver module for indoor lighting 500116  
Complies with the R&TTE 1999/5/CE directive and that its conformity has been assessed pursuant to the applicable standards in force:  
EN62479:2010  
EN301489-1 V1.9.2  
EN301489-3 V1.4.1  
EN300220-2 V2.4.1

Signed at Chambray les Tours on 13/14/2015 by

Alexandre  
Chaverot, CEO



Visit our website to find out more about our Thomson range at

[www.thomsonbox.eu](http://www.thomsonbox.eu)

**THOMSON** is a **TECHNICOLOR S.A.** brand used under licence by:

Avidsen France S.A.S.- 32, rue Augustin Fresnel  
37170 Chambray les Tours - France