

Micro module pack for indoor lighting

ref. 500133



A - SAFETY INSTRUCTIONS

A1 - OPERATING PRECAUTIONS

- Do not allow children to operate the product.
- This product is designed exclusively for indoor use.
- Never connect the transmitter module from this pack or the switch that controls it to the electrical network.
- The receiver module is designed to be placed in the recess-mount housing of a switch or a ceiling fixture. Do not use this product to control an electrical socket
- The electrical installation must meet current standards (NF C 15-100) and should preferably be done by a qualified person.

A2 - SERVICING AND CLEANING

- Disconnect from the mains before carrying out any work on the system.
- Use a soft, slightly damp cloth to clean your product.
- Do not use abrasive or corrosive substances.
- Do not spray any products directly onto the unit.

A3 - RECYCLING



It is forbidden to throw used batteries into the dustbin. Batteries/accumulators containing harmful substances are marked with symbols (shown opposite) which indicate that they cannot be thrown away as ordinary waste. The corresponding heavy metal designations are as follows: Cd = cadmium, Hg = mercury, Pb = lead. You can dispose of these batteries/accumulators at local recycling amenities (centres for sorting recyclable materials) which are required to accept them. Keep batteries/button cells/accumulators out of reach of children and store them in a safe place not accessible to them as they could be swallowed by children or domestic animals. May be fatal if swallowed!

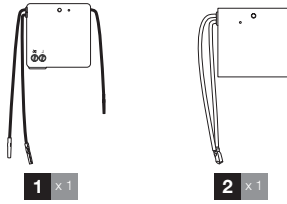
In the event that a battery is swallowed, consult a doctor or go to A&E immediately. Never short-circuit the batteries, and do not burn or recharge them as they may explode!



This logo denotes that devices which are no longer in use must not be disposed of as household waste as they are likely to contain hazardous substances which are dangerous to both health and the environment. Return the equipment to your local distributor or use the recycling collection service provided by your local council.

B - PRODUCT DESCRIPTION

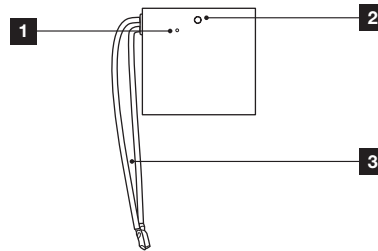
B1 - PACK CONTENTS



| | |
|---|--------------------------|
| 1 | Receiver micro module |
| 2 | Transmitter micro module |

B2 - TRANSMITTER MICRO MODULE

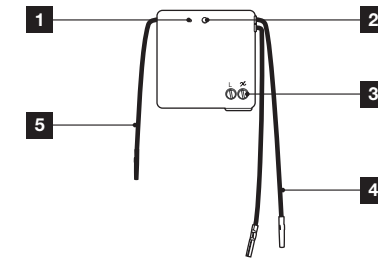
Front



| | |
|---|---------------------------|
| 1 | System on indicator light |
| 2 | Pairing button |
| 3 | Connection wire |

B2 - RECEIVER MICRO MODULE

Front



| | |
|---|---|
| 1 | System on indicator light |
| 2 | Pairing button |
| 3 | Terminal block for connecting to the mains supply |
| 4 | Switch connection wires |
| 5 | Radio antenna |

C - ABOUT THE THOMBOX CONCEPT

The Thombox is a home automation unit which connects to your ADSL modem (Freebox, Livebox, etc.) and enables you to manage your home security from any location as if you were using the actual alarm control unit at home or remotely. The system also allows you to control your comfort accessories (lighting, etc.), opens (shutter motors, garage doors, etc.) and manage your energy use (heating and electricity consumption) with just a few clicks on a computer, touchscreen tablet or smartphone, from anywhere in the world with an internet connection.

To enable the above and be able to create scenes (action sequences) which will simplify your day-to-day life, you need to register your Thombox (only when you first install it), and pair your ARW technology compatible accessories with it.

The Thombox is completely modular and there is no limit to the number of accessories it can control.

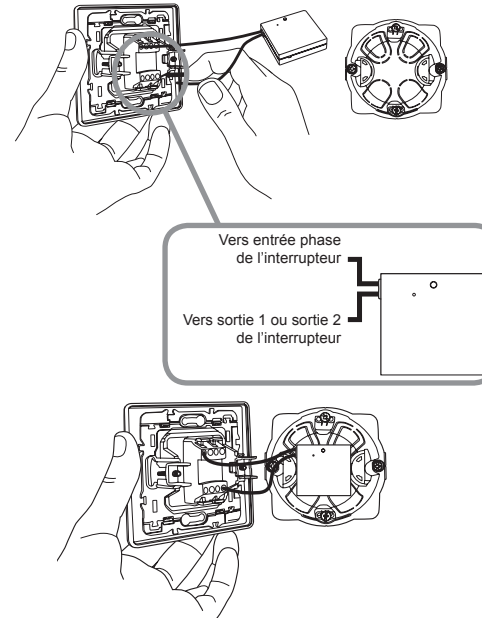
D - INSTALLATION

D1 - TRANSMITTER MICRO MODULE

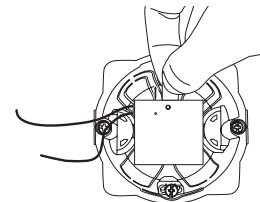
The transmitter micro module is designed to be placed in a suitable recess-mount housing, behind a switch.

Warning: Never connect this module or the switch that controls it to the electrical network.

Connect the module to the switch as follows:



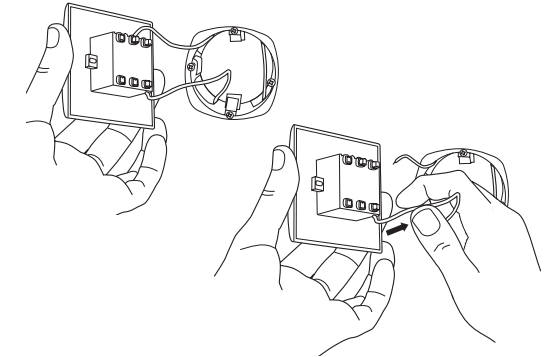
Remove the tab on the side of the transmitter micro module to connect the battery.



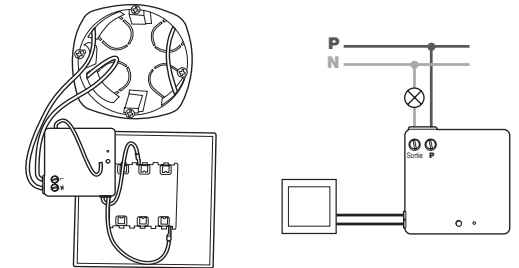
D2 - RECEIVER MICRO MODULE

The receiver micro module can be installed either behind an existing switch or behind a ceiling fixture.

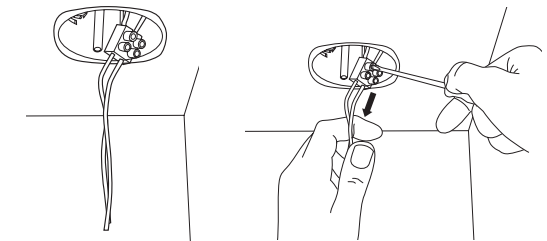
Installation behind a switch:



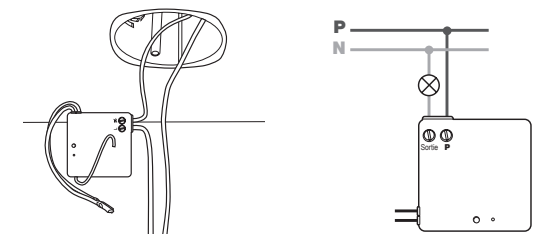
After the electrical supply has been disconnected, disconnect the existing wall switch.



Connect the module as above. Connect the two black wires behind the switch. **Do not connect them to the electrical network.**
Installation behind a ceiling fixture:



After disconnecting the electrical supply, open the ceiling recess-mount housing.



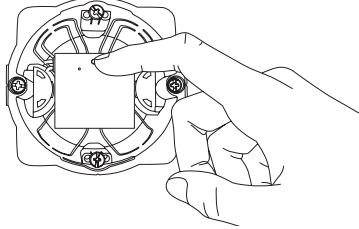
Connect the module as above. The 2 black wires are not used; insulate them using adhesive insulating tape, or cut them off.

E - CONFIGURATION

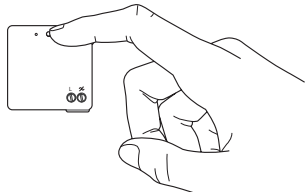
E1 - PROGRAMMING

To pair modules with each other, the light they control must be turned off. If necessary, press briefly on the receiver micro module's pairing button.

- On the transmitter module, hold down the pairing button for 3 seconds.



- While the LED on the transmitter module is blinking, press and hold the button on the front of the receiver module for 3 seconds. Pairing is now complete.



E2 - PROGRAMMING WITH OTHER ACCESSORIES

Any element can be paired with other devices from the range: wall remote control, remote control light bulb socket, universal drive relay, Thombox, etc.

- To pair the transmitter module with another device, hold its pairing button for 3 seconds.
- Then place the device to be controlled into pairing mode. Refer to the device's user guide to find out how to do this.

Notes: You can pair up to five devices with the transmitter module.

To pair the receiver module with another control device, refer to the user guide of the device you want to pair with your product.

During pairing, you will be asked to put the receiver module into pairing mode:

- The light to be controlled must be turned off. If necessary, press briefly on the receiver micro module's pairing button.
- When asked to put the receiver module into pairing mode, press and hold the pairing button on the front of the receiver module for at least 3 seconds.

F - USING THE PRODUCT

F1 - USING THE PRODUCT WITH ANY DEVICE

- Switching the switch connected to the transmitter module turns the light it controls on and off in turn.
- If a switch is also connected to the receiver module, it too turns the light it controls on and off in turn.
- You can turn the connected light on and off from any device paired to the receiver module. Please refer to the user guide for each of the paired devices to find out how to turn on and off your light.
- If the receiver module is paired to a Thombox, the Thombox is informed of this change.

F2 - USING THE PRODUCT WITH THE THOMBOX

- When you pair your receiver module with a Thombox, your module will appear in the 'Lights & Power' section. Your receiver will also appear as an 'Actuator' in the rule creator. You can then create rules to manage when your light turns on and off.
- When you pair your transmitter module with a Thombox, it does not appear in the dashboard but is available in the rule creator in the 'Control' section. You can then create rules which the device can trigger.

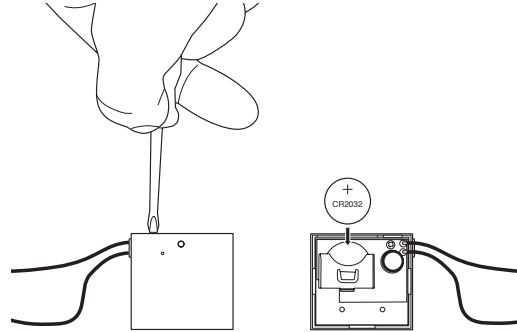
F3 - REMOVING ALL SAVED DEVICES

- To remove all of the devices controlled by the transmitter micro module, hold the pairing button for 3 seconds.
- Release then hold the pairing button on the module for 3 seconds. All appliances controlled via the module will then be deleted from the memory.

F4 - REPLACING THE TRANSMITTER MICRO MODULE BATTERY

If you notice that the range of your module is decreasing, the battery should be replaced. If the module is paired with a Thombox, the Thombox is informed of this.

Use a 3V CR2032 battery.



Under normal conditions, battery life is approximately one year.

G - TECHNICAL AND LEGAL INFORMATION

G1 - TECHNICAL CHARACTERISTICS

RECEIVER MODULE:

- Radio frequency: 868.3MHz, ARW protocol
- Radio range: up to 150m, open air range*
- Power supply: 230V AC 50Hz
- Operating temperature: 0°C to 40°C, indoor use only.
- Minimum power: 5W
- Maximum power: 300W

TRANSMITTER MODULE:

- Radio frequency: 868.3MHz, ARW protocol
- Radio range: up to 150m, open air range*
- Power supply: 3V DC via a CR2032 battery
- Maximum number of devices in memory: 5
- Operating temperature: 0°C to 40°C, indoor use only

*The indicated radio range refers to the open air range, i.e. no obstacles between the receiver and the transmitter. Any obstacle or disturbance will reduce this range.

G2 - WARRANTY

This product is guaranteed for parts and labour for 2 years from the date of purchase. It is essential to retain the proof of purchase for the duration of the warranty period.

The guarantee does not cover damage caused by knocks or accidents. This product must not be opened or repaired by any persons not employed by AVIDSEN except to insert or replace the batteries.

So-called consumables, such as the batteries, are not covered by the warranty.

G3 - ASSISTANCE AND ADVICE

- If, in spite of the care we have taken in designing our products and drafting these instructions, you do encounter difficulties when installing your product or you have any questions, we urge you to contact one of our specialists who will be glad to help.
- If you encounter operating problems during the installation or a few days afterwards, it is essential that you are in front of your installation when contacting us, so that one of our technicians can diagnose the source of the problem, as it will probably be the result of a setting that is incorrect or an installation that is not to specification. If the problem is caused by the product itself, the technician will give you an RMA number so that you can return the unit to the shop. Without this RMA number, the shop may refuse to exchange your product.

Any help during the installation of your Thombox, or during the association of your Thomson Connected Homes range devices? Please call our technical team at the following number:

Tel: + 33 (0)892 701 369

(Audiotele: €0.337/min incl. VAT)

Monday to Friday, 9 AM to 12 PM and 2 PM to 6 PM.

G4 - DECLARATION OF CONFORMITY

With the R&TTE directive

AVIDSEN hereby declares that the following equipment: Micro module pack for indoor lighting 500133

Complies with the R&TTE 1999/5/CE directive and that its conformity has been assessed pursuant to the applicable standards in force:

EN62479:2010

EN60669-1:1999+A1:2002+A2:2008

EN60669-2-1:2004

EN301489-1 V1.9.2

EN301489-3 V1.4.1

EN300220-2 V2.4.1

Signed at Chambray les Tours on 30/04/2015 by

Alexandre
Chaverot, CEO



Visit our website to find out more about our Thomson range at

www.thomsonbox.eu

THOMSON is a **TECHNICOLOR S.A.** brand used under licence by:

Avidsen France S.A.S.- 32, rue Augustin Fresnel
37170 Chambray les Tours - France